



Innovations for Influential Evaluation

2–5 September | Conrad Hotel Shanghai, People's Republic of China

[#AsianEvaluationWeek](#) [#AEW2024](#)



Measuring National Evaluation Systems

The case of the National Evaluation Capacities Index (INCE)

Sarah Klier

German Institute for Development Evaluation (DEval)

In this presentation I will talk about

- 1) why culture and local approaches to evaluation matter, when we talk about National Evaluation Systems (NES),
- 2) why participation and reflection is key when we want to measure NES in a systematic way,
- 3) how the National Evaluation Capacities Index (INCE) helped to align Evaluation Capacity Development work in Latin America and the Caribbean.

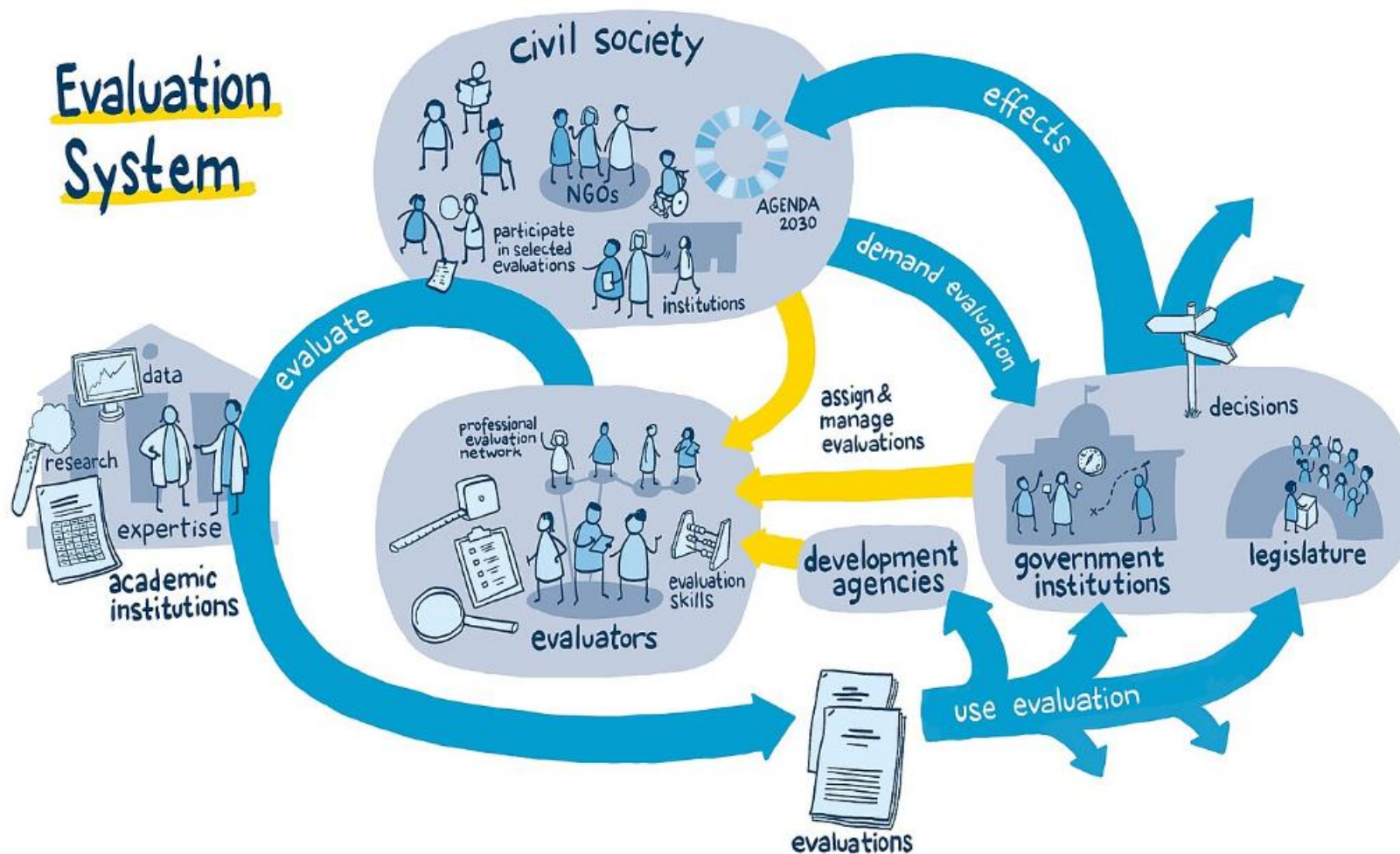
Actors involved in the development and application of the National Evaluation Capacities Index (INCE)



With financial support from the



Evaluation System



The five dimensions of a National Evaluation System

Use of evaluations

Incidence of evaluation results for decision-making, learning and accountability.

Quality of evaluations

Alignment of evaluation processes and products with international standards.

Institutional structure

Elements underpinning the evaluation function in the country.



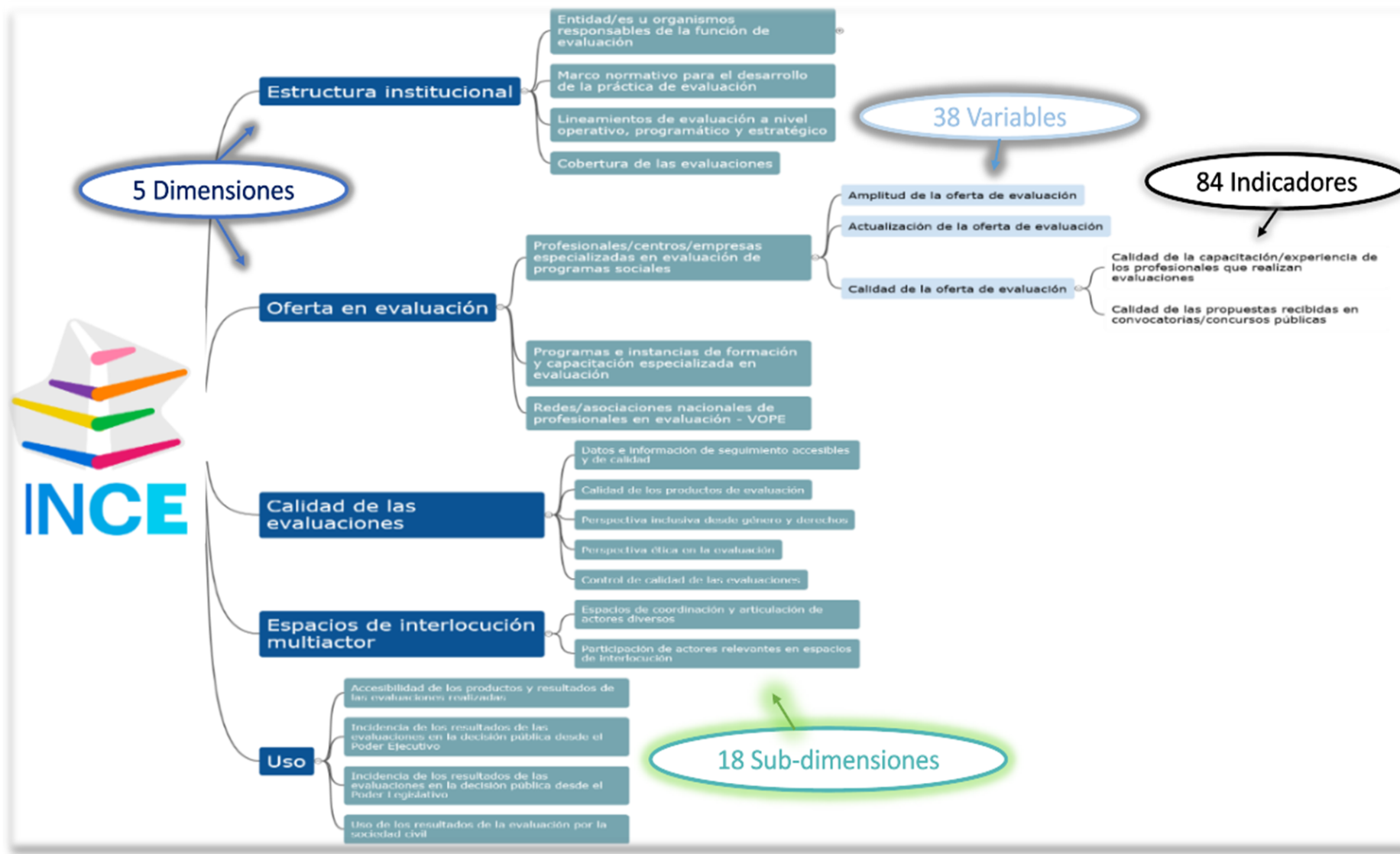
Multi-agent spaces

Openness to stakeholder participation in the development of the national evaluation system.

Evaluation offer

Offer of professional evaluation services, including academic training programmes.







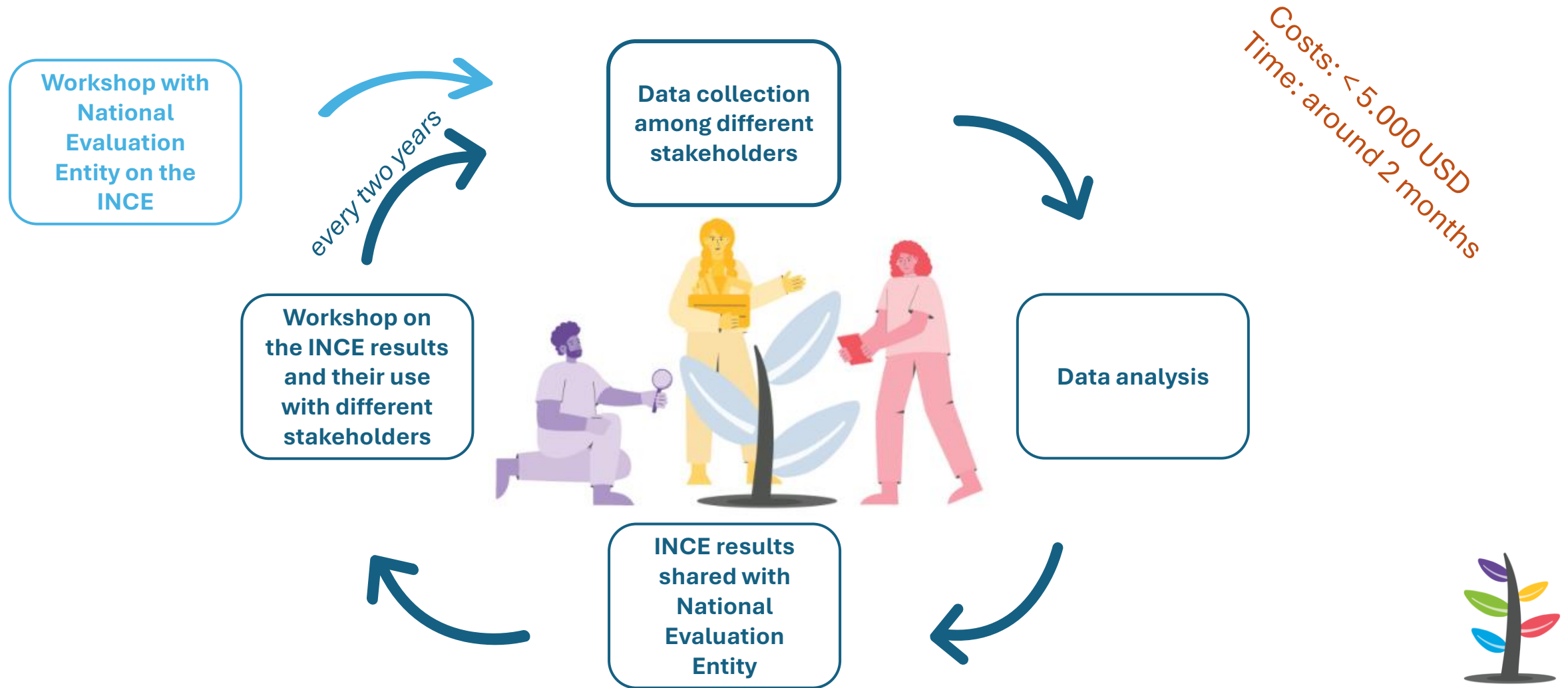
Nur ein kleiner Ausschnitt aus dem 1100 Meter langen Schilder-Dschungel in Frankfurt
Foto: Sven Moschitz



Parts of a (traffic) system



Applying the INCE



INCE Benefits

1

National networks



2

Regional network



3

Openly accessible data

(guiding ECD work, NES-baseline,
useful for academic work on NES etc.)

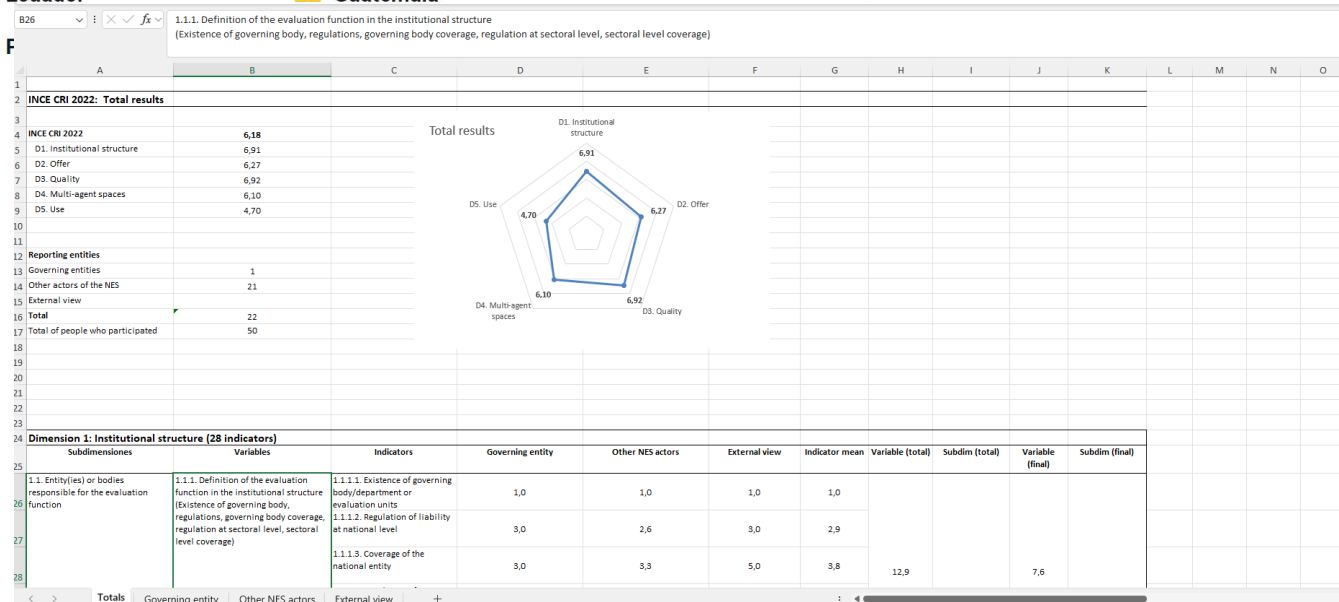


Explore the INCE initiative and visually compare different national evaluation systems. You can also download individual XLS files, to analyze it further with your own Business Intelligence tools

Select country

- > Argentina
- > Dominican Republic
- > Mexico
- > Uruguay

- Colombia
- Costa Rica
- Ecuador
- Guatemala



Next steps

WFP and DEval would like to extend INCE to other regions and broaden the INCE-network.



Thank you for your attention!

Juan.Sanz@deval.org

Sarah.Klier@deval.org

Sven.Harten@deval.org

