



AI & ML in Action:

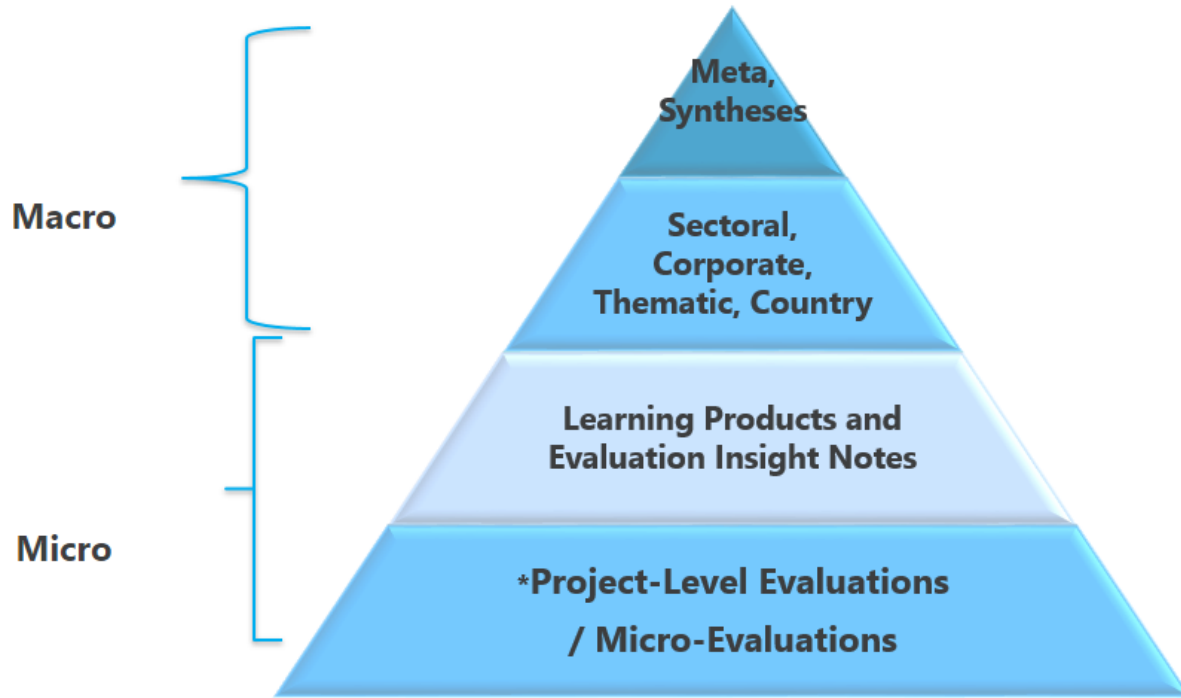
Revolutionizing Efficiency and Innovation in Evaluation

Christopher Nelson: Manager Sustainable Development and Infrastructure, World Bank IEG

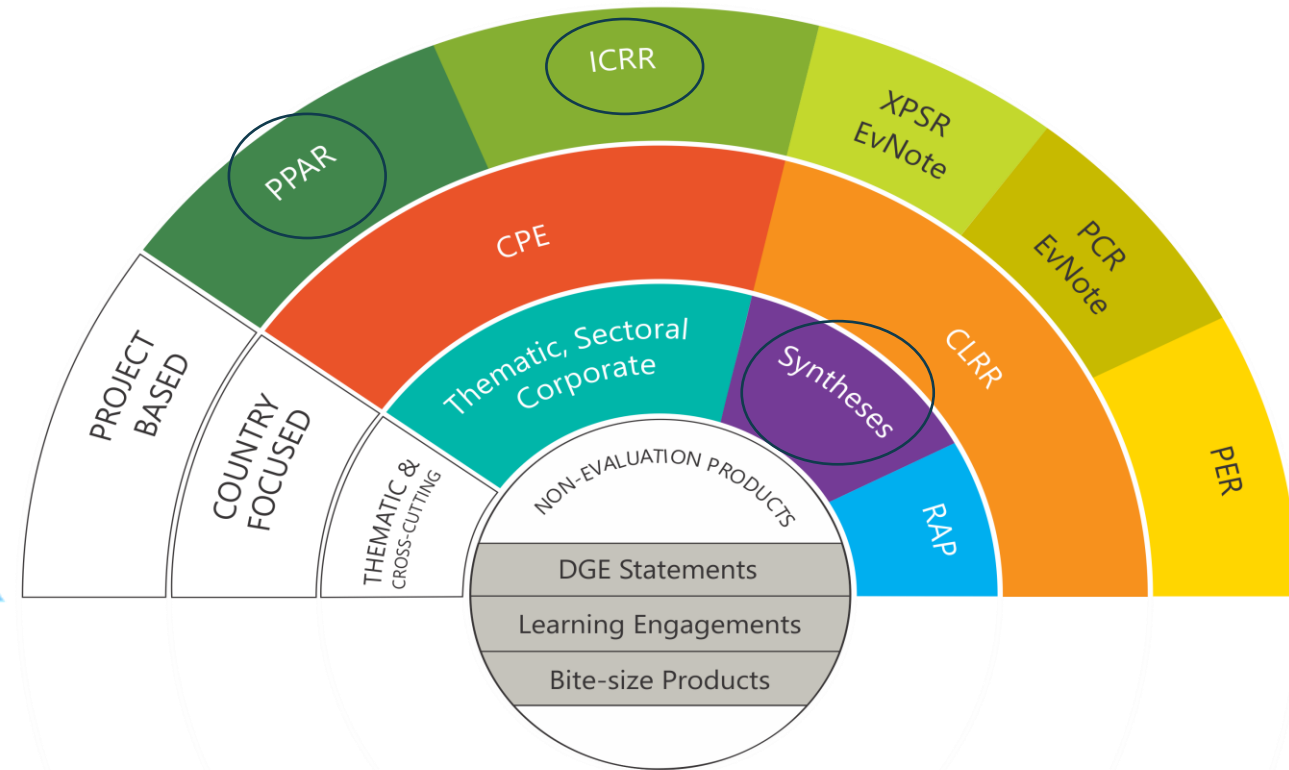


Where IEG sees opportunities for AI and ML

Levels of Evaluation



IEG Products



Machine Learning & AI for Synthesis and Completion Reports (ICRs)

1. An example of Machine Learning at work: Evaluation Insight Note (EIN) Methodology

The Question: **How has the World Bank integrated resilience into food security operations?**



181 Projects

PORTFOLIO REVIEW

Identified 112 active and 69 closed and evaluated World Bank lending projects between FY16-22 that had a Food Security Theme Code.



4 Pillars

CATEGORIZATION

Organized into pillars of food security outlined by the Food and Agriculture Organization of the United Nations (FAO): availability, access, utilization, and stability.

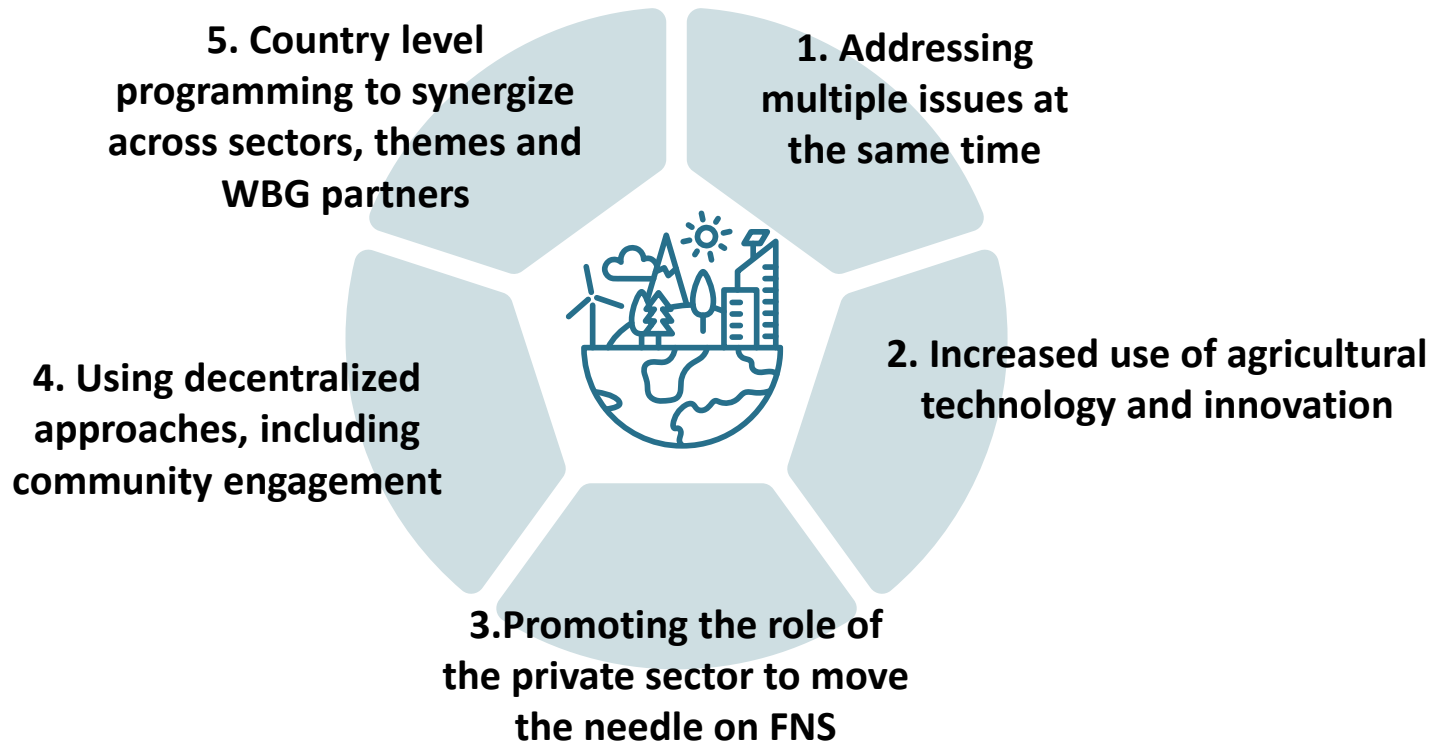


2 FAO Indexes

MAPPING

Charted for resilience aspects and analyzed lessons for closed projects.

ML Impact: Five elements for successfully building resilience for food security projects



2. An example of AI incorporation at work: a better data platform for AI prompts in evaluation work

The Question: **How can we build the required internal data architecture to respond to AI tools?**



2400 Projects

PORTFOLIO

Since 2017 reform – all reviewed projects in data repository in templated format

3 Elements

CATEGORIZATION

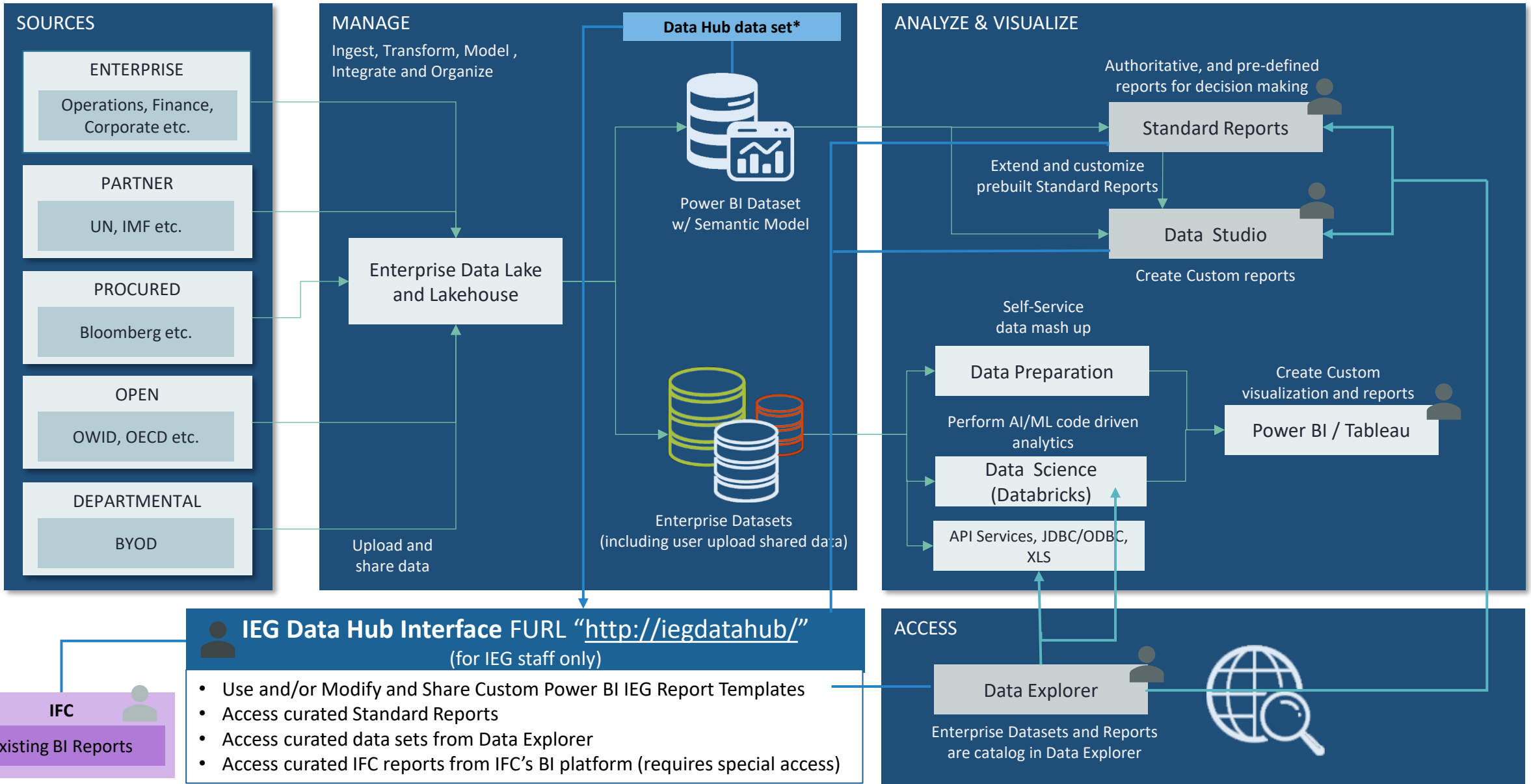
- Business Intelligence
- Disaggregation
- Internal and External benchmarking

2 AI functions

Project Level & Curated Datasets

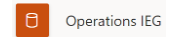
Utilize AI at project level AND for curated Data

WB Data Infrastructure with IEG Data Hub 2024



***Data Hub data set**

*The Operations IEG’s data set is IEG-owned data combined with Operations data within the Enterprise Data Lake. It is what you connect to through Power BI when you select a data set:



Connected live to the Power BI dataset: Operations IEG in Corporate - Operations. Information is accessible to ADB Management and Staff. It may be shared outside ADB with appropriate permission.